



# Potomac Valley Chapter American Rhododendron Society

www.arspvc.org

Winter Newsletter: January 2007

## Calendar

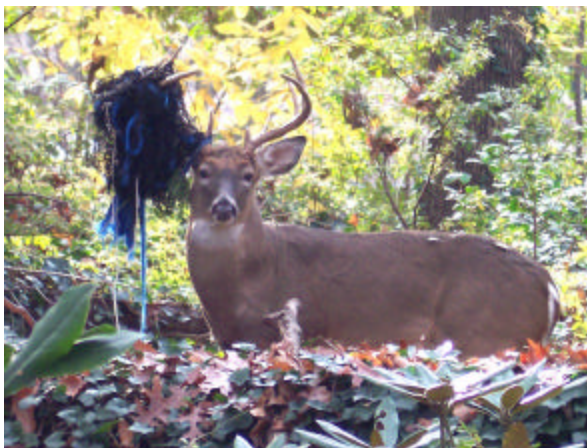
- \* **January 14, 2007** - Regular Meeting at the Arboretum
- \* **March 18, 2007** - Regular Meeting at the Arboretum
- \* **April 12-15, 2007** - ARS Convention, San Francisco, CA
- \* **April 27-29, 2007** - District IX Meeting, Richmond, VA
- \* **May 7-8, 2007** - Proposed Field Trip - Blue Ridge Parkway
- \* **May 12, 2007** - Flower Show at the National Arboretum

## Next Meeting: "Chapter Share Session" January 14, 2007, 1:00 – 4:00 PM

Although this winter has been very mild so far, we usually do not invite outside speakers for our January meetings due to the possibility of inclement weather. Instead, we ask our members to "share."

We will begin with a talk illustrating an article in this issue, "The Lesser Known Gable Rhododendrons" by Jane Goodrich. Afterwards, we will ask others to share. Tell us more about your garden, plants that bloomed well for you or those that didn't, or gardens you visited this year. Bring 5 to 10 slides to put in a Kodak Carousel, or if you have gone digital, bring a CD with 5 to 10 graphic images or a short PowerPoint presentation to display on our new LCD projector.

Don Hyatt may even have some video of "Bubba", a 10-point buck that tore down a neighbor's fence, which then became entangled in his antlers. With streamers dangling in the breeze, the deer looked like he was wearing a wreath for the holidays! (*see below*)



If you don't have pictures, bring some questions to "ask the experts" about rhododendrons or azaleas. We have many very knowledgeable people in our chapter and they are a tremendous resource to us all.

At our January meeting, we are also planning our first annual Chapter Photography Contest organized by Bob McWhorter and Barry Sperling. (*See contest rules*)

## Chapter Officers

**President:** Jon Wallenmeyer

jjjp1984@mac.com

**Vice-President:** Bob McWhorter

mcwho@comcast.net

**Treasurer:** Phyllis Rittman

prittman@erols.com

**Refreshment Duty:** Persons whose last names begin with **I** through **P** are asked to bring some refreshment goodies for the table.

**Directions:** The National Arboretum is located in northeast Washington, D.C., off of Bladensburg Road at 24th and R St. The Arboretum website provides excellent directions: [www.usna.usda.gov](http://www.usna.usda.gov)

## Photography Contest Guidelines

Below are the rules for our chapter photography contest to be held at the January meeting. Winners will be determined by popularity poll but since we want to encourage participation, prizes on the order of \$50 are being considered for each category. Please enter!

**Category I: Flowers** - Close up of flowers, such as a rhododendron truss or an azalea spray.

**Category II: Scenery** - Rhododendron or azalea plants in the landscape or in the wild.

**Category III: Other** - This category is for any photographs featuring rhododendrons or azaleas that don't seem to fit into the first two categories: pictures of foliage, creative effects, rhododendron people from our chapter, or whatever.

## Photography Contest Rules

1. Only our chapter members or associate members may enter their photographs.
2. Digital and film camera photos may be entered but must be in print form no larger than 8" x 10" including matting.
3. Photos must have been taken in 2006.
4. Photos must be naturally occurring, no props, setups or posing.
5. Photos must be taken in the member's garden, in another person's garden with consent, on a convention garden tour, or in the wild.
6. Exhibitors may not enter more than two pictures in any category.
7. Photos may be matted, but this is not required.
8. No frames or glass allowed.

9. Photos should be backed with mat, foam or cardboard no thicker than ¼ inch so that they may be displayed standing against a support if the committee finds it necessary.
10. Name, address, picture title and category should be entered ON BACK ONLY.
11. Photos remain the property of the exhibitor and will be returned, but we request permission to use copies in our newsletter, on our web site, or in e-mail correspondence with other ARS groups.

#### Contest Coordinators:

- ?? Bob McWhorter – 410-923-6408,  
mcwho@comcast.net
- ?? Barry Sperling - 703-765-7062,  
barrysperling@ix.netcom.com

Exhibitors may submit photos to Barry Sperling or Bob McWhorter in advance, or bring them to our winter meeting at the Arboretum on **January 14, 2007**. The attendees at the meeting will vote for favorites with prizes awarded at the end of the meeting.

#### In Memoriam: Thais Spencer

It is with great sadness that we must report the passing of Miss Marie Thais Spencer on December 25, 2006 at the age of 93. Thais was a long time member of our chapter, a very kind and generous person who had an avid interest in azaleas and rhododendrons, including hybridizing. She will be greatly missed.

#### Trouble with Trees!

Large trees are wonderful in the landscape, but can become a threat to the home. Two of our members have had trees hit their homes recently, so if you have some trees that are dying or are in need trimming, think about having it done before they cause problems.

In a strong storm on November 16, some large branches came down on the roof of the McWhorter's home in Gambrills, MD. Fortunately, Bob and Rosa were not at home since one branch pierced the roof over their bedroom and heavy rains caused the ceiling to collapse. Water also damaged the ceiling in the living room located on the floor below.



*Tree Damage in the McWhorter's Bedroom*

Earlier that month, associate member Bill Bedwell returned from a Middle Atlantic Chapter ARS meeting only to discover that a huge white pine had fallen on his home. The tree was in decline and he had planned to take it down, but the tree fell anyway a clear day.



*Bill Bedwell surveys damage to his home in Dinwiddie, VA*

#### Planning Ahead: Mark your Calendars!

##### ARS Convention: San Francisco, April 12-15, 2007

The ARS Convention will be in San Francisco from April 12–15 with optional pots-conference tour in Northern California from April 16 to 18. The Winter ARS Journal will carry registration materials, but if you are thinking about attending, you might want to do some advanced planning. It looks like a great program. Check out the convention website:

[www.ars2007conf.org](http://www.ars2007conf.org)

##### District 9 Meeting: Richmond, VA, April 27-29

Plan to attend our District 9 meeting at the Holiday Inn Crossroads in Richmond, VA. Our hosts in the Middle Atlantic Chapter have arranged an exciting program with garden tours, speakers, banquets, and a plant swap where people bring excess plants to trade with others. Registration details will follow separately.

##### Field Trip: Blue Ridge Parkway, May 7–8, 2007

We are trying to organize another field trip down the Blue Ridge Parkway this spring in early May. It will be a repeat of our 2006 post convention tour, but traveling by car instead of bus. Our current plans are to head south on Monday, May 7, 2007, making a few stops along the way before heading down the Parkway. We would convene that night at the Peaks of Otter Lodge. The next morning, we would visit the garden of Paul James near Roanoke before heading home. Some of us may also continue south to Asheville, NC, to see the *R. vaseyi* and early spring wildflowers. Let Don Hyatt know if you are interested in the trip.

##### Flower Show: May 12, 2007 8:00 AM – 4:00 PM

We will once again be holding our annual Flower Show at the U.S. National Arboretum this year. Please volunteer to help us out, and bring flowers, too!

## The Lesser Known Gable Rhododendrons

By Jane Goodrich

My discussion will concentrate on the lesser known broadleaf rhododendrons developed by Joe Gable in Stewartstown, PA. When I refer to “We” in this article, I mean Joe Gable’s daughter Caroline Gable, George Ring, my husband Ray Goodrich, and myself. I am the only one left of the group to tell the story.

Joe Gable kept good notes, inventories, and small field notebooks. A good bit of the seed came from Joseph Rock, a plant collector who gathered seeds in China. I am sure there were other sources but we couldn’t trace them. Perhaps the predominance of Rock seed occurred because the seed distribution came through American institutions, or maybe because we had access to Rock’s field notes.

Gable’s early work included ‘Katherine Dalton’, a cross of *R. smirnowii* x *R. fortunei*. There was a “filler” in a prior Potomac Valley Newsletter stating



‘Katherine Dalton’  
in the Beaudry Garden

that this plant was reputed to bloom in the fall but the note said, “it doesn’t happen here”. The ink wasn’t dry when my plant erupted into fall bloom. Yes, I wrote that piece. There is another plant called ‘Smirfort’ of the same cross that we are trying to locate.

Early on, Gable was in touch with Mr. Magor of Cornwall, England. He was a major influence in Gable’s work since he sent him pollen, seed, and advice.

A reference to “C-II” is *R. catawbiense* x *R. fortunei* pollen from Magor. After Gable bloomed ‘Catalga’ (*R. catawbiense* album ‘Glass’), he repeated that cross with the hardiest of the *R. fortunei* plants that he and Guy Nearing were able to raise after 7 generations. That *catawbiense*-*fortunei* hybrid is called ‘Mary K’.



‘Mary K’ – Pale Lavender Pink



‘Mount Siga’ in the Gable Garden

You can’t favor any of your children, but with plants you have free rein. My favorite of the Gables, hands down, is ‘Mt. Siga’, *R. vernicosum* aff. R 18139. Its sister is ‘Kulu’, a bit pinker of the two. These took 20 years to bloom from seed but Gable said it was well worth the wait. Rooted cuttings do not take so long to bloom. The “aff.” means “affinis”, or “like” *vernicosum* and probably not the pure species. The “R 18139” refers to the Rock seed number.

Gable crossed *vernicosum* aff. R 18139 onto ‘Mary Belle’ to get ‘Isabel Gable’, ‘Peaches and Cream’, and the recently registered ‘James Allison’.



‘James Allison’ – Cream with red blotch

In the mid 1920’s, Gable received seed from the 1924 Rock expedition to China. One packet was labeled ‘*R. decorum*’. One day we were out in Gable’s woods down by the yellow *R. brachycarpum*. George Ring picked a truss of the “*decorum*” and on close examination we saw red styler glands, a diagnostic trait for *R. vernicosum*. It is a nice white and comes true from seed. Perhaps some cutting grown plants labeled as “Gable’s Hardy *decorum*” are from this old plant. If you have one, check for the red styler glands as you may have *vernicosum* instead of *decorum*.

The 1932 Rock expedition yielded for Gable a white *R. vernicosum*, which he called his “true” *vernicosum* as opposed to the Rock 18139 selections that he labeled *vernicosum* “affinis”.

One day in Gable's woods, Ray found a plant that was very fragrant and he asked Carol what it was. She said, "It's a stranger to me." Thus the name became 'Fragrant Stranger', actually another *R. vernicosum*. It is a seedling from the 1932 expedition originally labeled *R. fargesii*. If you can't trust a taxonomist, who can you trust? The problem with the missed diagnosis is related to the weather. It must be warm enough for the red styler glands to show. Magor wrote about this in an early British publication.



Now we come to 'Mars'. It is a great red on the west coast but starts getting poorly when it crosses the Mississippi River. Gable said of his 'Mars' crosses, "Some are tender, some are awful, and some are magnificent." The cross of 'Mars' with (*catawbiense*, red x *haematodes* A.A.) was made at least twice. The A.A. refers to the Arnold Arboretum form but it was thought to be a hybrid. Gable selections included 'Marcath No. 1', 'Marcath No. 4', 'Frazzles', 'Red Sox', 'Marcath No. 58', and 'Tom Thumb'. (Note the "h" at the end of "Marcath", a combination of **Mars-catawbiense-haematodes**.) 'Tom Thumb' selfed gave the "Tommies" including 'Plain Pink' (Tommy No. 3), 'Mary Yates', 'Bonnie', and 'Little Bonnie'.



'Plain Pink'

The Gable-Yates cross of 'Mars' x 'Catalglá' gave us 'Running Deer', 'Cat-Mar' (which the deer don't like), 'Straw Hat', and 'Dr. Bess'.

Gable and Nearing shared seeds and plants over a long period. 'Gretchen' is a Nearing cross, seeds of which he shared with Gable. It is hard to root, but its sister seedling 'Rochelle' roots very easily. Also from Nearing seed came 'Nearing Pink' and 'Nearing Purple'. When Nearing suffered a major flood, Gable sent him a truckload of plants so he could start his nursery again.

Perhaps their major contribution was in producing a hardy *R. fortunei*. For seven generations, they crossed the hardiest seedlings until they got a strain that was hardy to -10 degrees.

In a batch of *fortunei* seedlings, a cream showed up which he called 'Fortunei Cream'. It is hardy to -10 degrees. Gable crossed it twice with *vernicosum* aff. R 18139, and one of those plants is the buff yellow 'Mary Garrison'. It has a loose truss but makes a good parent.



'Mary Garrison' at Gable's Barn

The elusive yellows... for me they fade after a few years. These include 'Joe Gable', Cat-Wardii No. 1 and No. 2, and 'Moonshot'. Even with 'Catalglá' in the crosses they don't seem to have the necessary backbone to thrive.

'Annie Dalton', 'Madonna', and 'Degram Pink' are all from the cross (*decorum* x *griersonianum*) x 'America'. These seem to have poor roots and may no longer be around.

However, he crossed 'Annie Dalton' with the hybrid 'Atrosanguineum x griersonianum' and got better plants including the numbered Annie Dalton hybrids 13-59, 14-59, and 15-59.

'Madonna' crossed with the hardy *fortunei* gave the large flowered white 'Madforts' and the reverse cross, the Fortunei-Madonnas.



'Madfort'

Seedling Variation from Gable's Cross: (*R. houlstonii* x *R. vernicosum* aff. R 18139)



The Seed Parent: *R. houlstonii*



Peach Pink Seedling: 'Dr. Rock'



Blush Pink Sister: 'Shell'

*R. houlstonii* crossed with *vernicosum* aff. R 18139 gave 'Dr. Rock'. Some people didn't think Gable got his cross but its sister seedling is 'Shell'. There is also a plant Carol called 'Sheer Pink' which she said had *houlstonii* in it.

from England, *maximum* was the only thing in bloom. When the Maxhaems bloomed, he put 'Caroline' on one of them to give us 55-64, a warm pink later named as 'W. H. Ebaugh'.

The search isn't over for the lesser-known Gables. This spring I was talking with Ray Smith and he mentioned a plant he'd bought called 'Plum'. The hardiness and short name made me think it might be a Gable, but that was only a wild guess. When organizing my slides for this talk, I ran across a slide labeled 'Plum' at Gable's. Thanks to Ray Smith, we now have a plant of it for the future Gable grove at Margaret White's property, the 13-acre garden that will eventually become a horticulture park in Fairfax County. Thanks to Ed Reiley, we have a plant of 'Pa-Jo', another Gable seedling raised by Paul and Joanne Netherwood, and it is also destined for the Gable grove at Margaret White's Garden.



'W. H. Ebaugh'

Lastly, we have latest Gable hybrid to be registered. It is known as 'Fair Isle', a name that came from a knitting pattern. Carol gave us the original plant; the cross was ('Disca' x 'Romany Chai'). Its large flowers are deep pink and ruffled. After getting permission from the Gable family, I registered that plant in 2005 and there is now one of those at Margaret's garden, too. Thank you.



'Mary Belle'

'Atrier' is the cross 'Atrosanguineum' x *griersonianum*, and a workhorse Gable used often to impart hardiness. 'Dechaem' (*decorum* x *haematodes*) crossed with 'Atrier' produced 'Mary Belle', 'Flamingo', and 'Shrimp'.

'Best in Show' (6-60) got its name because Carol and her father were down in the woods with a visitor who said, "If I'd had this plant yesterday, it would have been Best in Show." It is the same cross as 'Mac Kantruss', which did get Best in Show at the Potomac Valley Truss Show one year. Unfortunately, the truss flopped a minute or two after the judges gave it the ribbon. If only we had known we could have brought a replacement since all the visitors wondered why such a wilted truss would get the top prize.



'Mac Kantruss'

Deep pink edges, light center, red throat

'Catalgl'a' was *R. catawbiense* album seed that came from Powell Glass, and that crossed with *decorum* gave the plant we now know as 'Anne Glass'. It was originally registered as 'Mrs. Powell Glass', until the second Mrs. Gass objected. Then they changed the name.

Gable put *R. haematodes* pollen from Mr. Magor on *R. maximum* which gave 'Maxhaem Yellow' and 'Maxhaem Salmon'. By the time the pollen arrived



'Fair Isle' - Ruffled light pink

## Notes on the Seed Exchange - by Don Hyatt

We have many interesting things this year in our seed exchange: hybrid crosses, open pollinated seed from superior plants, and seed collected in the wild.

While on a trip to Nova Scotia this fall, I had a chance to meet with Captain Dick Steele at his nursery, Bayport Farm. In the early 1970's, Captain Steele spoke to our chapter about the legacy of Joe Gable, and it was his inspiring talk that encouraged our Potomac Valley members to form the Gable Study Group. Now at the age of 91, he is still going strong and still making crosses. Mentally as sharp as ever, he has a full head of hair, is very agile, and still goes botanizing in the wilds of Newfoundland. He doesn't even have a wrinkle!



Captain Richard M. Steele, age 91

I wished I had something to record his entertaining stories as he related his travels with Joe Gable, David Leach, and others. In his own right, Captain Steele ranks among the greats in our rhododendron realm. In 2004, he received the Order of Canada, their nation's highest award to honor his many contributions. He had received the ARS Gold Medal in 1998.

That afternoon, I strolled through Captain Steele's 40 acres of woods admiring huge rhododendrons that had stood the test of time. Escorted by John Weagle, another great Canadian plantsman who spoke at our 2004 PVC Fall Banquet, we admired plants growing with little care for 30 years or more. I realized many of them had Gable heritage, but it was like seeing what might have resulted if Joe Gable had continued his hybridizing. I tried to gather seeds from superior foliage forms that had good evaluations by the Captain.

In our exchange, we have seed from Steele's hardy *R. decorum* and a magnificent *R. brachycarpum* with the toughest foliage imaginable. I got seed from a row of 20-ft tall rock hardy seedlings with faultless foliage of (*fortunei* x *catawbiense*), the reverse cross of Gable's hybrid 'Mary K'. We found some seedlings labeled (*vernicosum* x QE2) ('Queen Elizabeth 2') that

were 8 ft. tall with glossy leaves. I found various labels saying yellow, apricot, or orange and found a few seedpods, too. Some plants just had codes or maybe a note: "Yellow, never lost a pip."



Walter Ostrum describes some yellow hybrids to John Weagle

While in Nova Scotia, I also visited the seaside garden of Walter Ostrum, another horticulturist extraordinaire who raises wildflowers for Canada's wholesale trade. He had beds of double bloodroot (*Sanquineum canadensis*) and Showy Lady's Slippers (*Cypripedium reginae*) tucked throughout a spectacular landscape of rhododendrons and azaleas among the rocks. His hybrids had such compact habit and superb foliage they wouldn't have to bloom, but they do!

Walter gave me some seedpods from foliage plants I admired, such as his (*maximum* x *aureum* – F2) or [(*brachycarpum* x *aureum*) x *caloxanthum*] both of which he said were yellow. Later that evening, John Weagle showed me photos of Walter's garden in bloom. Yes, he has yellows... spectacular yellows!

Bruce and Marianne Feller, Associate Members from New York, sent seeds of some lepidotes and other treasures. They gave us more seed of their deep pink *R. schlippenbachii*, a superb form of that species and one of the most heavily requested seed lots we've ever had.

Doug Jolley sent us seed from several species collected in the wild in West Virginia, as well as native azalea hybrids using Harry Wise's fragrant, heat tolerant cross (*austrinum* x *calendulaceum*). Doug also sent us a cross of that hybrid onto his superb salmon *calendulaceum*, "Best Azalea" at the 2006 Convention.

Maynard Shirven has sent us several great crosses including three using Don's variegated *austrinum*. (Not this Don!) Norman and Jean Beaudry gave us crosses using hybrids such as their semi-double white from the cross (Mrs. A.T. de la Mare x Helen Everitt), and Eveline Pilkington's excellent clear red, 'Consolini's Super Red'. Jane Goodrich gave us seed of several great plants including her cross, ('Yellow Baby' x *fortunei* cream). There are some Don Hyatt crosses in there too. Now we need your help in raising some of these seedlings in your garden!

## Seed Exchange 2007 - Potomac Valley Chapter ARS

The following seeds are offered at cost to our members: \$0.60 per packet including postage. Orders are limited to one packet per variety but please list alternates in case certain varieties are over subscribed and there are not enough seeds to share. Return your order to Don Hyatt before **February 1, 2007**, with check payable to Potomac Valley Chapter ARS. Available seed will be divided among those requesting the variety and mailed out in early February.

**Don Hyatt: don@donaldhyatt.com**

**Special Thanks to our Seed Donors:** **Be:** Norman and Jean **Beaudry** (Bethesda, MD), **Br:** Karel **Bernady** (Chester Springs, PA), **Fl:** Bruce and Marianne **Feller** (Old Field, NY), **Go:** Jane **Goodrich** (Vienna, VA), **Hu:** Jerry Hudgens, (Churchville, MD), **Hy:** Don **Hyatt** (McLean, VA), **Jo:** Doug **Jolley** (Heaters, WV), **Os:** Walter **Ostrum** (Nova Scotia, Canada), **Sh:** Maynard **Shirven** (Alexandria, VA), **St:** Captain Richard **Steele** (Nova Scotia, Canada), **Wh:** Margaret **White** (Falls Church, VA).

### Hand Pollinated (hp) or Collected in the Wild (cw)

1. *arborescens*, cw, Wayah Bald, NC, (Hy)
2. *arborescens*, cw, Tucker County, WV (Jo)
3. *calendulaceum*, orange, cw, Avery Cnty, NC (Br)
4. *calendulaceum*, red, cw, Avery County, NC (Br)
5. *calendulaceum*, yellow, Engine Gap, NC (Hy)
6. *calendulaceum*, mix, Engine Gap, NC (Hy)
7. *calendulaceum*, mix, Jackson County, NC (Hy)
8. *calendulaceum*, cw, Nicholas County, WV (Jo)
9. *calendulaceum*, cw, Pocahontas County, WV (Jo)
10. *calendulaceum*, cw, Wayah Bald, NC (Hy)
11. *periclymenoides* (?), cw, Audra St. Pk, WV (Jo)
12. *prinophyllum*, cw, Garrett County, MD (Jo)
13. *vaseyi*, cw Transylvania County, NC. (Hy)

### Rhododendron and Azalea Species, Open Pollinated (op)

14. *alabamense*, Schwind form, op, (Sh)
15. *anwheiense*, op, (Hy)
16. *arborescens*, large flower, op, (Hy)
17. *brachycarpum*, Steele's hardy, op (St)
18. *carolinianum*, op (Wh)
19. *decorum*, Steele's hardy, op (St)
20. *degronianum* ssp. *micranthum*, op (Os)
21. *fortunei*, lavender-pink, op (Hy)
22. *hyperythrum*, white, op (Hy)
23. *makinoi*, op (Hy)
24. *metternianum* alba, op (Go)
25. *metternichii*, op (Hy)
26. *mucronulatum* 'Crater's Edge' (pink), op (Hy)
27. *periclymenoides*, op (Jo)
28. *reticulatum*, op (Fl)
29. *prunifolium*, op (Wh, Hu)
30. *schlippenbachii*, Feller's pink, op (Fl)
31. *schlippenbachii*, light pink, op (Wh)
32. *vaseyi*, pink, op (Wh, Hy)
33. unknown red deciduous azalea (*weyrichii*?)  
Plant was raised from seed collected in China (Go)

### Elepidote Rhododendron Crosses, Hand Pollinated (hp)

34. Bellringer x Glenolden, hp (Hy)
35. (Kluis Sensation x Caroline) x (Scintillation x Avalanche), hp (Be)
36. (Mrs. A.T. de la Mare x Helen Everitt) x Cape White, hp (Be)
37. Nestucca x Consolini's Super Red, hp (Be)
38. Shazaam x Apritan, hp (Hy)
39. Yellow Baby x *fortunei*, cream, hp (Go)

### Elepidote Rhododendron Hybrids, Open Pollinated (op)

40. *aureum* x Prelude (yellow), op (Os)
41. Almost Yellow (G593), op (Go)
42. (*brachycarpum* x *aureum*) x *caloxanthum*, op (Os)
43. *catawbiense* compactum x QE2, op (St)
44. Disca x *vernicosum* R 18139, op (Go)
45. Gable's Pink No. 3, op (Go)
46. (*fortunei*, cream x *vernicosum* 18139 op), op (Go)
47. *fortunei* x *catawbiense*, op (St)
48. Jane's Orange (catfortcampy-Mary Garrison), op (Go)
49. Steele Q280-2 (pale yellow), op (St)
50. Steele's Pale yellow - Never lost a pip, op (St)
51. Mary Garrison, op (Go)
52. Martin Keister White (yak-metternichii), op (Hy)
53. (*maximum* x *aureum*) - F2, op (Os)
54. Mt Siga, op (Go)
55. *vernicosum* x QE2, orange-apricot, op (St)
56. *vernicosum* x QE2, yellow, op (St)
57. Yellow Baby x *fortunei* hybrid, op (Go)

### Evergreen Azaleas, Hand Pollinated (hp)

58. Tina's Whorled x Vuyk's Scarlet, hp (Hy)
59. Yoro (Kurume) x Cinderella (Glenn Dale), hp (Sh)

**Evergreen Azaleas, Open Pollinated (op)**

- 60. Dream (single deep pink), op (Hy)
- 61. Laurie Russell (double pale pink), op (Hy)

- 62. Moonbeam (large single white), op (Hy)
- 63. Pocono Pink (single, pale salmon pink), op (Hy)

**Deciduous Azaleas, Hand Pollinated (hp)**

- 64. Admiral Semmes x Sham's Yellow, hp, (Hy)
- 65. *austrinum*, Don's variegated x early orange Exbury (Sh)
- 66. (*austrinum* x *calendulaceum*) x (*austrinum* x *calendulaceum*), hp, (Jo)
- 67. *calendulaceum* (salmon, Best Azalea in 2006) x (*austrinum* x *calendulaceum*), hp (Jo)

- 68. early orange Exbury x *austrinum*, Don's variegated form (Sh)
- 69. early orange Exbury x Gibraltar (Sh)
- 70. My Mary x Yellow Delight, hp (Jo)
- 71. Sommerville's Sunrise x *austrinum*, Don's variegated (Sh)

**Deciduous Azaleas, Open Pollinated (op)**

- 72. *austrinum* x *calendulaceum*, op, (Jo)
- 73. Chetco (yellow), op (Hy)
- 74. Goldflakes (yellow), op (Hy)
- 75. Light Orange Knap Hill, op (Hy)
- 76. Marina (pale yellow Exbury), op, (Hy)

- 77. Pavanne (pink & yellow), op (Sm)
- 78. Red Knap Hill (King Estate), op (Wh)
- 79. Yellow Delight, op (Jo)
- 80. Mt. Ranier, op (Fl)

**Lepidote Rhododendron Hybrids, Open Pollinated (op)**

- 81. Blue Baron, op (Fl)
- 82. Epoch-augustinii, op (Hy)
- 83. Floda, op (Fl)
- 84. 24 Karat, op (Go, Hy)

**2007 Seed Order Form - Potomac Valley Chapter ARS**

Return to: Don Hyatt by February 1, 2007

Name: \_\_\_\_\_ (Please Print)

Address: \_\_\_\_\_  
 \_\_\_\_\_

Telephone: \_\_\_\_\_ Email: \_\_\_\_\_

| Packet No. | Variety |  | Packet No. | Variety |
|------------|---------|--|------------|---------|
|            |         |  |            |         |
|            |         |  |            |         |
|            |         |  |            |         |
|            |         |  |            |         |
|            |         |  |            |         |
|            |         |  |            |         |
|            |         |  |            |         |
|            |         |  |            |         |
|            |         |  |            |         |
|            |         |  |            |         |

\_\_\_\_\_ Total Packets x \$0.60 each = \_\_\_\_\_  
 (Please make checks payable to Potomac Valley Chapter ARS)

|   |
|---|
| <p><b>Donald W. Hyatt, Newsletter Editor</b><br/> <b>Potomac Valley Chapter ARS</b><br/> <b>Don@donaldhyatt.com</b></p> |
|---|